



GO4
CORK
by Amorim

Underlay ONE VAPOUR BARRIER

UNDERLAY FOR ACOUSTIC INSULATION
WITH PRE-ATTACHED VAPOUR BARRIER



Vapour
Barrier



Dimension
0.9x10 m



Thickness
1.8 mm

9m²

TECHNICAL PROPERTIES



★★★★★

Moisture protection



★★★★☆

Reduction
of impact noise



★★★★☆

Thermal
resistance



★★★★☆

Compensates
for uneven floor



★★★★☆

Protection
from damage
from falling objects

Material Description & Properties

Underlayment blend of cork granules and recycled PET foams with a PET film Vapour Barrier and a PET textile carrier⁽¹⁾ for sound insulation.

KEY FEATURES

- 2 in 1 solution: Pre-attached vapour barrier for moisture protection.
- Excellent acoustic insulation.
- Low thermal resistance.
- Durable against loads.
- Designed according to circular economy concept.
- Tested according to MMFA/EPLF requirements group 1.

(1) May contain vestiges of fiber glass and balsa

TECHNICAL DATA

TEST	REQUIREMENT	UNIT	RESULT
Punctual conformability (PC)	≥ 0.5	mm	> 0.7 >1.2 ⁽³⁾
Compressive strenght (CS)	≥ 60	kPa	> 150
Compressive creep (CC)	≥ 10	kPa	> 35
Impact sound (IS)	≥ 10	dB	16
Reflected walking sound (RWS)	–	%	TBD
Thermal Resistance (R) ⁽²⁾	≤ 0,15	m ² C/W	–
Dynamic load (DL)	≥ 10 000	cycles	≥ 10 000
Moisture Protection (SD)	≥ 75	m	> 75

(2) Suitable for underfloor heating and cooling

(3) Film side | Fabric side

THERMAL INSULATION

Thermal Conductivity ⁽¹⁾	TBD W/mK
Thermal Resistance	TBD (m ² °C/W)

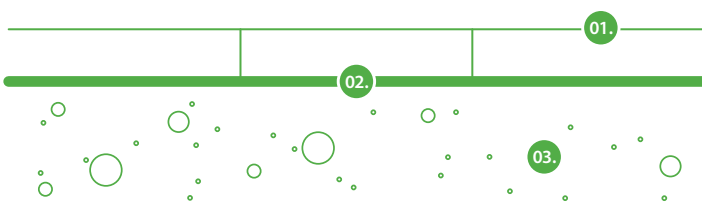
⁽¹⁾ EN 8301

ACOUSTICAL RESULTS

Flooring	Laminate floor
Thickness (mm)	1.8
ΔLw (dB) ⁽¹⁾	16

⁽¹⁾ ISO 10140-3 and ISO 717-2

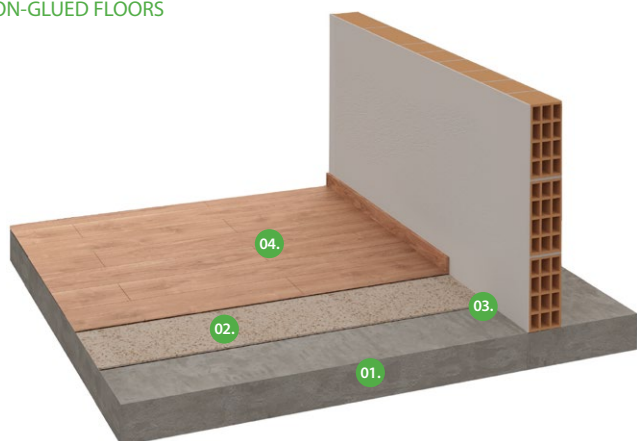
TEST APPARATUS (ΔL_w)



- 01. Laminate floor
- 02. Underlay GO4CORK ONE VB (1.8 mm)
- 03. Concrete slab with 140 mm thickness

APPLICATION SCHEMES

NON-GLUED FLOORS



- 01. Reinforced concrete slab
- 02. Underlay GO4CORK ONE VB
- 03. Perimeter insulation barrier
- 04. Non-glued laminated floor

GENERAL INSTALLATION INSTRUCTIONS

GENERAL INSTALLATION INSTRUCTIONS

The following installation instructions are recommended by Amorim Cork Composites, and are not intended to be a definitive project specification. They should be interpreted and applied taking into account the recommendations of the manufacturers of the flooring to be installed.

1. PREPARATION OF THE SUBFLOOR

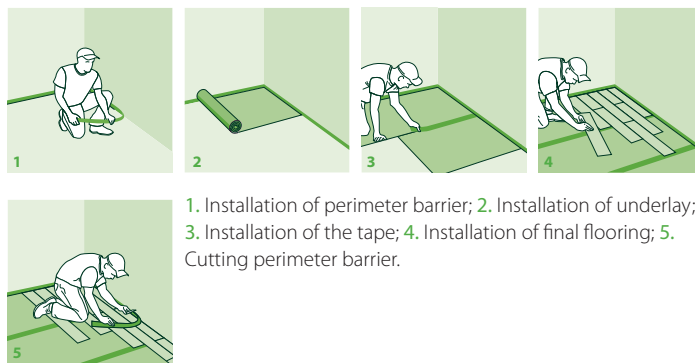
- The subfloor must be level, dry, clean and in good structural conditions. A floor is considered level if the deviation height is less than 2mm over a distance of 2.5 linear meters. Deviations above this value must be leveled out before underlay installation.
- The humidity content of the concrete substrate must not exceed 2.5 % (MC) by weight. Any moisture problems need to be solved before installation. New concrete slabs need to cure for at least 120 days before installation.
- The environmental conditions during the installation should be: temperature >10°C and humidity <75%

2. INSTALLATION OF THE UNDERLAY

This underlay must be installed with the vapour barrier facedown on the subfloor. Place one roll of the underlay parallel to the wall and in the opposite direction you plan to install the final floor to reduce seams. Cut the underlay material roll to the desired length and install it directly, covering the entire surface of the room. When unrolling your rolls, install the next row immediately next to the previous one. However, be sure to not overlap the underlay edges nor leave any gaps. Use a tape to securely seal the rows together and assure seamless moisture seal between rows. Never mechanically secure the underlay with screws, nails or staples as this may compromise its effectiveness. Install the final floor perpendicularly to the underlay. Always follow the flooring manufacturer's recommended installation instructions.

APPLICATION PROCESS

FLOATING INSTALLATION WITH PRE ATTACHED VAPOUR BARRIER



1. Installation of perimeter barrier; 2. Installation of underlay; 3. Installation of the tape; 4. Installation of final flooring; 5. Cutting perimeter barrier.



**AMORIM
CORK
COMPOSITES**

The data provided in this Material Data Sheet represents typical values. This information is not intended to be used as a purchasing specification and does not imply suitability for use in a specific application. Failure to select the proper product may result in either equipment damage or personal injury. Please contact Amorim Cork Composites regarding specific application recommendations. Amorim Cork Composites expressly disclaims all warranties, including any implied warranties or merchantability or of fitness for a particular purpose. Amorim Cork Composites is not liable for any indirect special, incidental, consequential, or punitive damages as a result of using the information listed in this MDS. Any of its material specification sheets, its products or any future use or re-use of them by any person or entity. For contractual purposes, please request our Product Specifications Sheet (PDA).

www.amorimcorkcomposites.com